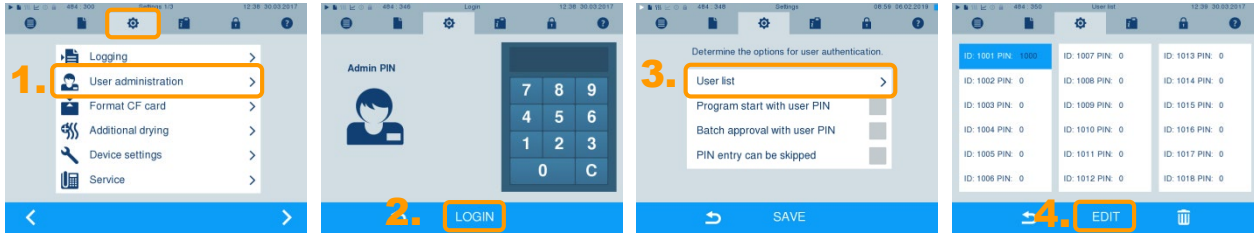


### User administration (setting, editing and deleting the admin/user PIN) -----

Settings made in the **User administration** can only be performed after entering the admin PIN (set as "1000" upon delivery). The pre-set admin PIN should be changed during the autoclave first installation.

1. Select the **Settings** menu → **User administration**.
2. Enter the admin PIN and confirm with **LOGIN**. The display switches to the **User administration** menu.
3. Select menu **User list** to display the complete user list.
4. The ID 1001 is reserved for the admin PIN.  
Change the pre-set admin PIN by pressing the button **EDIT** and confirm with **SAVE**.
5. All further users are added after ID 1002.  
The user PINs can be added/changed in the same way as the admin PIN.



### Electronic clearance process on the display-----

Please ensure that the clearance process is activated on the display before the autoclave is delivered. If the clearance process is not required, you can deactivate it in the following manner:

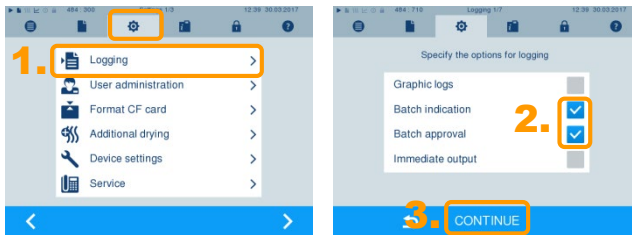
1. Select the **Settings** menu → **Logging**.
2. Working in the window in which the options for graphic recording, the authorization options and immediate output are determined, de-select the options "Batch indication" and "Batch approval".

#### PLEASE NOTE

The **user administration** menu can be used to decide whether it is necessary to enter a user PIN before start or following the end of a program run.

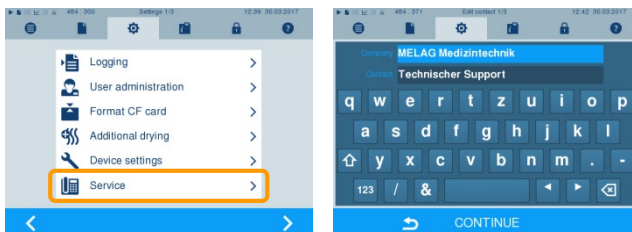
The **Logging** menu is used to determine all further settings regarding logging and log output, e.g. output media, IP addresses, transmission via FTP/TCP etc.

3. Work through the **Logging** menu using **CONTINUE** and accept the settings in the last window with **SAVE**.



### Entering contact address in the "Settings" menu-----

After the autoclave has been set up, the contact data of the responsible stockist, service technician/MELAG customer services can be entered in the **Settings** menu → **Service**.



Read the user manual before commissioning.

